



**EWS1200D-10T**  
**EWS1200-28T**  
**EWS1200-52T**

## Features & Benefits:

- > 10/100/1000 Mbps GbE Ports
- > Onboard Tools Manage Wired & Wireless Devices
- > SFP Slots Support Extended Connectivity via Fiber Uplinks, Redundancy & Failover
- > Network Troubleshooting, Monitoring, & Email Alerts
- > Centrally Manage Wired & Wireless Networks via ezMaster™
- > Configure, Manage & Monitor Up to 50 Neutron EWS APs Locally via Controller Mode
- > Security: Access Control List/Port Security; 802.1X & RADIUS Authentication
- > IGMP & MLD Snooping Provides Advanced Multicast Filtering & Network Efficiency
- > 802.3ad Link Aggregation (LACP) Supports Traffic Load Balancing
- > Voice VLAN for Fast, Reliable Deployment of VoIP Services
- > Advanced QoS with IPv4/IPv6 Ingress Traffic Filtering (ACLs) & Prioritization
- > Energy Efficient Ethernet (802.3az) Improves Energy Savings with Compliant Devices
- > Dual Firmware Images Improve Reliability & Network Uptime
- > Silent, Fanless Design (8/24 port) & Smart Fan Feature (48 port)

# Gigabit Managed Smart Switches

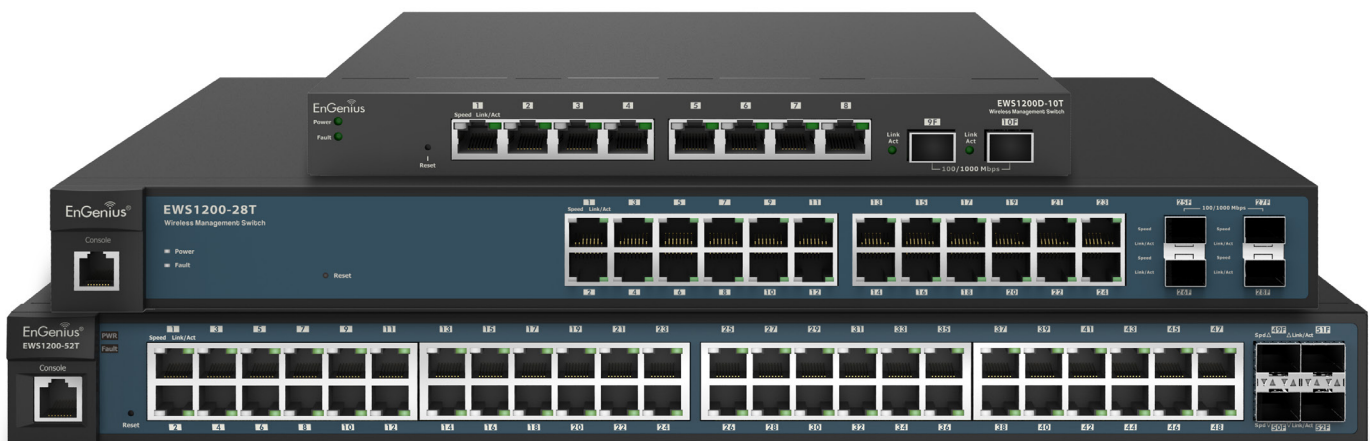
## Simplified Management & Optimal Network Performance for Small-to-Mid-Size Organizations

The EnGenius Gigabit Managed Smart Switches with WLAN Controller feature 8-, 24- or 48- Gigabit ports and support full feature Layer 2 manageability.

The Switches offer simplified network configuration, monitoring, and management options plus ezMaster™ Centralized Network Management Software, a robust, easy-to-use Web-based tool.

Enterprise-class features optimize network efficiency ensuring peak performance while reducing expenses for cost-conscious SMB organizations.

Whether installed in small or mid-size organizations such as medical offices, warehouses, or large homes, the Smart Switch's design and easy-to-use interface enables effortless and efficient deployment and operation. Organizations with limited IT support and budgets can create a reliable, efficiently managed network in no time.



## High Performance Gigabit & Management Flexibility

Each of the Switch's Gigabit Ethernet ports provide seamless, high-speed access for networked devices while reducing bottlenecks that can interrupt communications. The Switch offers deployment flexibility and four types of management options while efficiently supporting both wired and wireless networks.

### Types of Deployment = 4 Types of Management

#### 1 Wired LAN Only

Manage via third-party SNMP manager



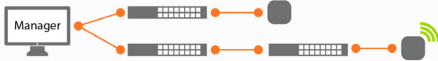
#### 2 Wired LAN+ Local Management

Manage locally via on-board tools



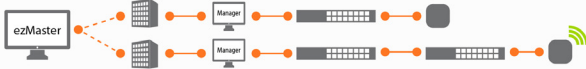
#### 3 Wired LAN + Wireless APs + Local Management

Manage locally via built-in controller



#### 4 Wired LAN + Wireless APs + Remote Management

Manage remote and distributed networks via ezMaster™



## Easy Network Management, Visibility & Troubleshooting

Achieve network management, visibility, and troubleshooting locally through the Switch's on-board Web interface tools or remotely with ezMaster software. Its Network Topology view automatically maps the deployment, displaying device relationships across the infrastructure, and is useful for troubleshooting issues without manual tracking.

## Wireless Device Management

Quickly discover, configure, and monitor Neutron EWS Access Points and manage up to 50 devices within the local subnet through the Switch's built-in wireless network controller features.

## Centrally Manage the Wired & Wireless Network

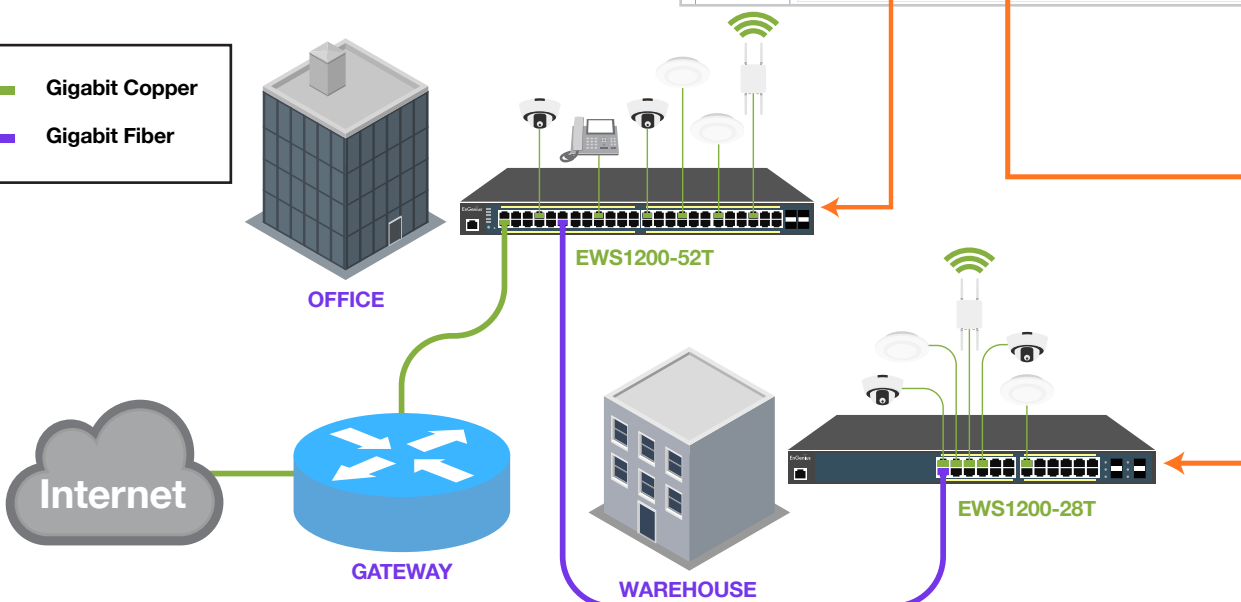
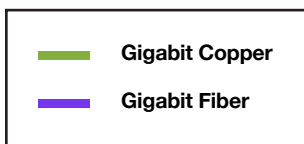
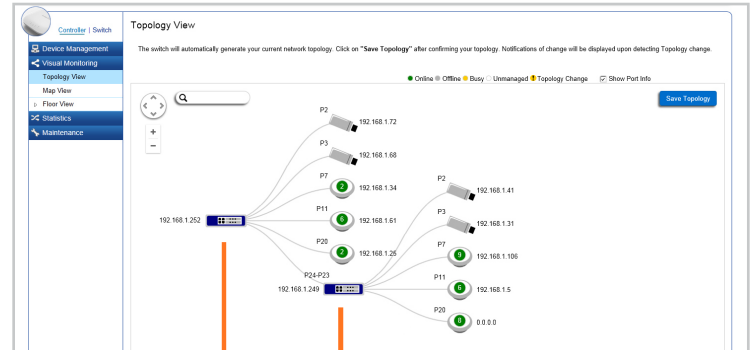
Remotely manage Neutron EWS Access Points, Switches, and IP Cameras through ezMaster Network Management Software. Centrally manage hundreds of EWS devices across the network regardless of its size or location with no licensing or subscription fees.

## VLAN/Voice & Quality of Service




Segment the network by departments or traffic types for increased performance and security with 802.1Q VLAN. Prioritize compliant VoIP and video traffic using 802.1p Class of Service (CoS) ensuring high bandwidth, time-sensitive data is forwarded immediately for clear, smooth voice and video delivery.

## Network Security

Establish a Guest VLAN to limit Internet resources for visitors while securing the network from sophisticated Trojans and malware that can use guest's mobile devices to attack the network.



## Managed Smart Switches

			
Models	EWS1200-52T	EWS1200-28T	EWS1200D-10T
10/100/1000 Base-T Ports	48	24	8
100/1000 SFP Ports	4	4	2
Console Port	1 RJ45	1 RJ45	-
Rackmount	19" 1U	19" 1U	9.44" (desktop)
Switching Capacity	104 Gbps	56 Gbps	20 Gbps
Forwarding Mode	Store-and-forward	Store-and-forward	Store-and-forward
MAC Address Table	8k	8k	8k
Packet Buffer Memory	1.5 MB	512 KB	512 KB
Power Source	60W Internal Power	30W Internal Power	DC12V/1A External
Full Load Power Consumption	54.02W	24.48W	6.9W
Management	ezMaster Network Management Software, Web GUI, CLI, SNMP, RMON, HTTPS, Dual Image		
Wireless Controller Supports EWS APs	Up to 50	Up to 50	Up to 50
Advanced QoS with IPv4/IPv6 Multicast Filtering	IGMP and MLD Snooping		
Auto-VoIP	•	•	•
VLANs	Max 4094 Static Groups, Voice VLAN		
Network Standards	IEEE 802.3 Ethernet IEEE 802.3i 10Base-T Ethernet IEEE 802.3u 100Base-TX Fast Ethernet IEEE 802.3ab 1000Base-T Gigabit Ethernet IEEE 802.3x Full-Duplex Flow Control IEEE 802.3z Gigabit Ethernet 1000Base-SX/LX IEEE 802.3ad Link Aggregation (Trunking) IEEE 802.1D Spanning Tree Protocol (STP) IEEE 802.1w Rapid Spanning Tree Protocol (RSTP) IEEE 802.1s Multiple Spanning Tree Protocol (MSTP) IEEE 802.1Q VLAN Tagging IEEE 802.1ab Link Layer Discovery Protocol (LLDP) IEEE 802.1p Quality of Service IEEE 802.1X RADIUS Access Control IEEE 802.3az Energy Efficient Ethernet		

Model	Description
<b>EWS1200-52T</b>	48-Port Gigabit Layer 2 Managed Smart Switch w/ WLAN Controller - Manage up to 50 Access Points
<b>EWS1200-28T</b>	24-Port Gigabit Layer 2 Managed Smart Switch w/ WLAN Controller - Manage up to 50 Access Points
<b>EWS1200D-10T</b>	8-Port Gigabit Layer 2 Managed Smart Switch w/ WLAN Controller - Manage up to 50 Access Points

## Flexible Distributed Network Management

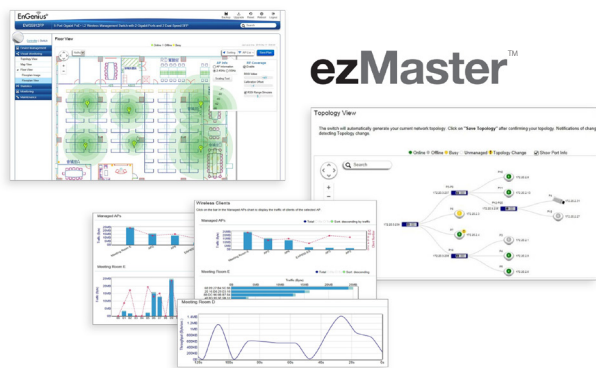
EzMaster Network Management Software expands the flexibility and scalability of Neutron Series Managed Access Points and Switches.

EzMaster allows organizations, such as branch offices and managed service providers to easily and affordably deploy, monitor, and manage a large number of Neutron EWS APs, and Switches across geographically diverse properties. Centrally manage an unlimited number of independent distributed networks in the same subnet or cross-subnet from a single, at-a-glance network dashboard, no matter where they're located.

Deploy ezMaster locally, remotely or via a Cloud-based service with or without an onsite WLAN controller.

## Powerful, Scalable Options

EzMaster scales with your growing business needs. Manage 1,000+ Neutron EWS Access Points and Switches and 10,000+ concurrent users. Together, Neutron EWS APs, Switches and ezMaster provide a flexible, fully integrated solution with redundancy support and future expandability for broader device connectivity.



## System Requirements

### Recommended environment for managing up to 500 APs

**CPU:** Intel® Core™ i3 3.6 GHz dual-core or above

**RAM:** 4 GB minimum

**HDD:** 500 GB (actual requirement dependent on log size)

**OS:** Microsoft® Windows® 7 or later + VMware® Player 7.0 or compatible virtualization software

### Recommended environment for managing up to 1,000+ APs

**CPU:** Intel® Core™ i5 3.2 GHz quad-core or above

**RAM:** 4 GB minimum

**HDD:** 500 GB (actual requirement dependent on log size)

**OS:** Microsoft® Windows® 7 or later + VMware® Player 7.0 or compatible virtualization software

### Browser Requirements

Internet Explorer 10 or better

Firefox 34.0 or better

Chrome 31.0 or better

Safari 8.0 or better

### Network Topology Requirements

At sites where APs are deployed: A DHCP-enabled network for APs to obtain an IP address

## Simplified Device Management

EzMaster Network Management Software makes device management easy. How? Through centralized bulk configuration, provisioning and monitoring, a comprehensive at-a-glance network dashboard, rich analytics and reporting, and much more.

## ezMaster Software Features

### > Centralized Management

- Configure, Managed & Monitor 1,000+ Neutron Devices
- Cross-Network AP Management
- AP Group Configuration

### > Access Point Configuration & Management

- Auto Channel Selection
- Auto Tx Power
- Background Scanning
- Band Steering (Auto Band Steering & Band Balancing)
- Client Isolation
- Client Limiting
- Fast Roaming
- L2 Isolation
- LED On/Off Control
- Multiple SSID
- RSSI Threshold
- Secure Guest Network
- Traffic Shaping
- VLAN Isolation
- VLAN Tag

### > Comprehensive Monitoring

- Device Status Monitoring
- Floor Plan View
- Map View
- Rogue AP Detection
- System Status Monitoring
- Visual Topology View
- Wireless Client Monitoring
- Wireless Coverage View
- Wireless Traffic & Usage Statistics

### > Management & Maintenance

- Bulk Firmware Upgrade
- Captive Portal
- Email Alert
- ezRedundancy (Available 2016)
- Kick/Ban Clients
- One-Click Update
- Remote Logging
- Seamless Migration
- SmartSync Redundancy (Available 2016)
- Syslog

## Technical Specifications

<b>Network Ports</b> <b>EWS1200D-10T</b> 8x 10/100/1000 Mbps Ports 2x 100/1000 Mbps SFP Ports <b>EWS1200-28T</b> 24x 10/100/1000 Mbps Ports 4x 100/1000 Mbps SFP Ports 1x RJ45 Console Port <b>EWS1200-52T</b> 48x 10/100/1000 Mbps Ports 4x 100/1000 Mbps SFP Ports 1x RJ45 Console Port	<b>Power Source</b> continued <b>EWS1200-28T</b> Full Load Power Consumption: 24.48W 30W Internal Power <b>EWS1200-52T</b> Full Load Power Consumption: 54.02W 60W Internal Power	<b>QoS</b> continued Bandwidth Control - Port-Based (Ingress/Egress, 64 Kbps~1000 Mbps) Broadcast/Unknown Multicast/Unknown Unicast Storm Control
<b>Performance</b> <b>EWS1200D-10T</b> Switching Capacity: 20 Gbps <b>EWS1200-28T</b> Switching Capacity: 56 Gbps <b>EWS1200-52T</b> Switching Capacity: 104 Gbps	<b>Software Features</b> <b>Layer 2 Features</b> 802.3ad Link Aggregation - Maximum of 8 Groups/8 Ports per Group Port Mirroring - One-to-One - Many-to-One Spanning Tree Protocol - 802.1D Spanning Tree Protocol (STP) - 802.1w Rapid Spanning Tree Protocol (RSTP) - 802.1s Multiple Spanning Tree Protocol (MSTP) MAC Address Table - 8K Entries Static MAC Address - 256 Entries 802.1ab Link Layer Discovery Protocol IGMP Snooping - IGMP v1/v2/v3 Snooping - Supports 4094 IGMP Groups - IGMP per VLAN - IGMP Snooping Querier - IGMP Snooping Fast Leave MLD Snooping - MDL Snooping v1/v2 - Supports 4,094 MLD Groups - MLD per VLAN Jumbo Frame - Up to 9,216 bytes 802.3x Flow Control 802.3az Energy Efficient Ethernet	<b>Access Control List (ACL)</b> Layer 2/3 - Supports Maximum 32 Entries (ACL) - Supports Maximum 256 Entries (ACE) ACL Based on: - MAC Address - VLAN ID - 802.1p Priority - Ethertype - IP Address - Protocol Type - DSCP
Forwarding Mode: Store-and-Forward SDRAM: 256 MB Flash Memory: 32 MB	MAC Address Table - 8K Entries Static MAC Address - 256 Entries 802.1ab Link Layer Discovery Protocol IGMP Snooping - IGMP v1/v2/v3 Snooping - Supports 4094 IGMP Groups - IGMP per VLAN - IGMP Snooping Querier - IGMP Snooping Fast Leave MLD Snooping - MDL Snooping v1/v2 - Supports 4,094 MLD Groups - MLD per VLAN Jumbo Frame - Up to 9,216 bytes 802.3x Flow Control 802.3az Energy Efficient Ethernet	<b>Security</b> 802.1X - Guest VLAN - Port-Based Access Control Supports RADIUS Authentication Port Security - Up to 256 MAC Addresses per Port Port Isolation DoS Attack Prevention BPDU Attack Prevention
<b>EWS1200D-10T / EWS1200-28T</b> Packet Buffer Memory: 512 KB <b>EWS1200-52T</b> Packet Buffer Memory: 1.5 MB	<b>VLAN</b> 802.1Q Support VLAN Group - Max 4,094 Static VLAN Groups Voice VLAN	<b>Monitoring</b> Port Statistics System Log RMON
<b>Physical Interface</b> LED Indicators Reset Button	<b>QoS</b> 802.1p Quality of Service - 8 Queues per Port Queue Handling - Strict - Weighted Round Robin (WRR) QoS Based on: - 802.1p Priority - DSCP	<b>Management</b> Web Graphical User Interface (GUI) Command Line Interface (CLI) BootP/DHCP Client/DHCPv6 Client SSH Server Telnet Server TFTP Client HTTPS SNMP - Supports v1/v2c/v3 SNMP Trap SNTP Configuration Restore/Backup Dual Images Email Alerts
<b>LED Indicators</b> <b>Device:</b> Power LED Fault LED	<b>Diagnostic</b> Cable Diagnostic Ping Test Trace Route	
<b>Ports:</b> Link/Activity/Speed (per Ethernet port) Link/Activity/Speed (per SFP slot)		
<b>Power Source</b> <b>EWS1200D-10T</b> Full Load Power Consumption: 6.59W DC12V/1A		

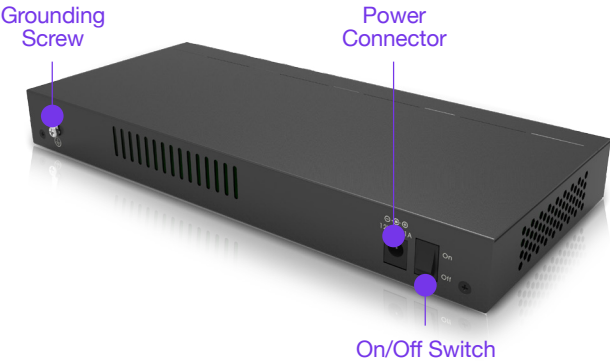
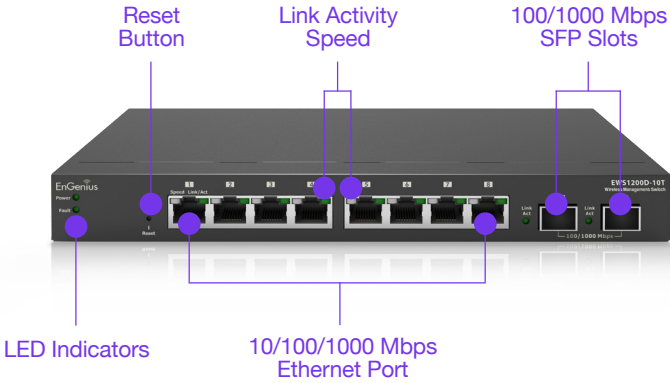
Technical Specifications continued

<b>MIB/RFC Standards</b>	
RFC1213	
RFC1493	
RFC1757	
RFC2674	
RFC 2863	
<b>Wireless Management Features</b>	
AP Supported (up to 50 APs in controller mode)	
Access Point Auto Discovery & Provisioning	
Access Point Auto IP-Assignment	
Access Point Group Management	
Remote Access Point Rebooting	
Access Point Device Name Editing	
Access Point Radio Settings	
Band Steering	
Traffic Shaping	
Fast Handover	
Fast Roaming	
Access Point Client Limiting	
Client Fingerprinting	
Wireless Security (WEP, WPA/WPA2 Enterprise, WPA/WPA2 PSK)	
AP VLAN Management	
VLANs for Access Point- Multiple SSIDs	
Secured Guest Network	
Capture Portal	
Access Point Status Monitoring	
Rogue AP Detection	
Email Alert	
Wireless Client Monitoring	
Background Scanning	
Wireless Traffic & Usage Statistics	
Real-Time Throughput Monitoring	
Visual Topology View	
Floor Plan View	
Wireless Coverage Display	
Map View	
Secure Control Messaging	

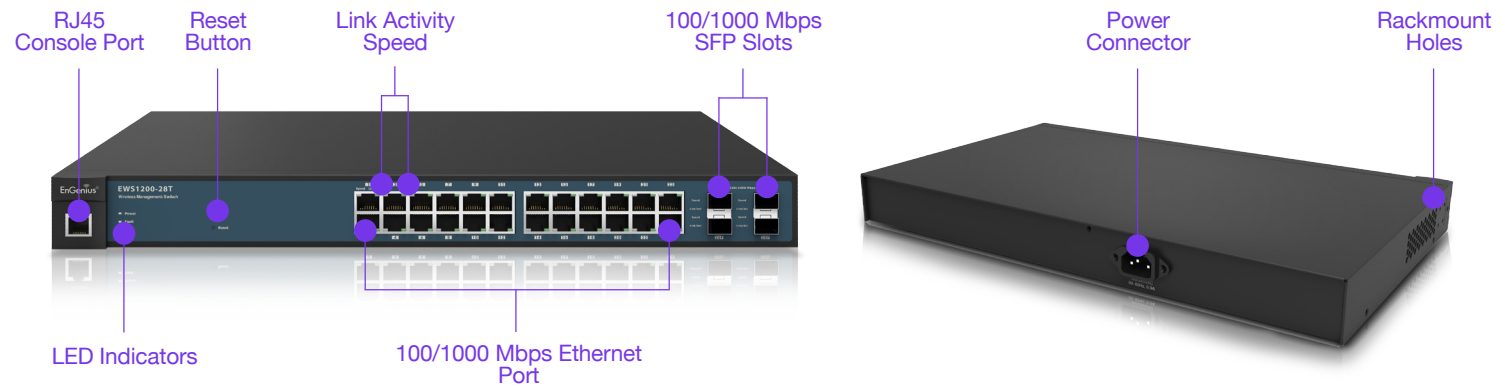
<b>Wireless Management Features</b> continued	
SSL Certificate	
Local MAC Address Database	
Remote MAC Address Database (RADIUS)	
Unified Configuration Import / Export	
Intelligent Diagnostics	
Bulk Firmware Upgrade Capability	
One-Click Update	
Kick/Ban Clients	
<b>Environmental &amp; Mechanical</b>	
<b>Temperature Range</b>	
<b>EWS1200D-10T</b>	
Operating: 32 to 104°F/0 to 40°C	
<b>EWS1200-28T / EWS1200-52T</b>	
Operating: 32 to 122°F/0 to 50°C	
Storage: -40 to 158°F/-40 to 70 °C	
<b>Humidity</b> (Non-condensing)	
5% - 95%	
<b>Dimensions &amp; Weights</b>	
<b>Device</b>	
<b>EWS1200D-10T</b>	
Weight: 1.33 lbs. (.61 kg)	
Width: 9.44" (240 mm)	
Depth: 4.13" (105 mm)	
Height: 1.06" (27 mm)	
<b>EWS1200-28T</b>	
Weight: 6.6 lbs. (3 kg)	
Width: 17.32" (440 mm)	
Depth: 10.23" (260 mm)	
Height: 1.73" (44 mm)	
<b>EWS1200-52T</b>	
Weight: 8 lbs. (3.68 kg)	
Width: 17.32" (440 mm)	
Depth: 10.23" (260 mm)	
Height: 1.73" (44 mm)	

<b>Package Contents</b>	
(1) EWS1200 Series GigE Managed Smart Switch	
(1) Quick Installation Guide	
<b>EWS1200D-10T</b>	
(1) Power Adapter	
(1) Wall-Mount Kit	
<b>EWS1200-28T</b>	
(1) Power Cord	
(1) Rack Mount Kit	
<b>EWS1200-52T</b>	
(1) Power Cord	
(1) Rack Mount Kit	
<b>Warranty</b>	
1 Year	
<b>Certifications</b>	
CE, FCC	

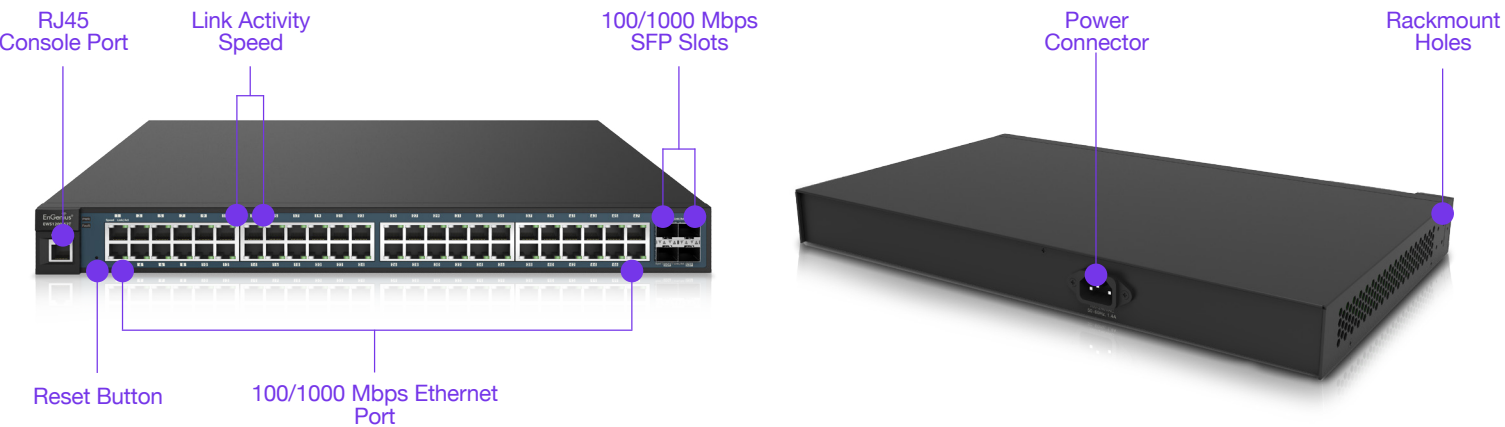
EWS1200D-10T



EWS1200-28T



EWS1200-52T



EnGenius Technologies | 1580 Scenic Ave. Costa Mesa, CA 92626  
Email: [partners@engeniustech.com](mailto:partners@engeniustech.com) | Phone: 888-735-7888 | Website: [engeniustech.com](http://engeniustech.com)

Features and specifications subject to change without notice. Trademarks and registered trademarks are the property of their respective owners. For United States of America: Copyright © 2016 EnGenius Technologies, Inc. All rights reserved.  
Version 1.0 - 08/16/16

