



Messaging Guide

EnGenius Cloud ESG610 SD-WAN Gateway

One Solution. No complexity.

The EnGenius Cloud security gateway unifies your network perfectly, providing your IT team with an incredibly easy setup, enterprise-level security, and an end-to-end network solution that can be cloud-managed from absolutely anywhere. The gateway is that crucial first line of defense—improving the flow of network traffic while delivering an extra layer of protection against increasingly sophisticated cyberattacks and malware.

High Speed 2.5 Gigabit WAN and LAN Ports

The security gateway has two WAN and two LAN ports capable of up to 2.5G speeds—more than double the speed of most gateways today. The gateway has not only high-speed Ethernet connections but a high inline 2.5Gbps architecture for superior uplink and downlink transmissions without the bottlenecks.

High-Efficiency Stateful Firewall

The EnGenius security gateway has a stateful firewall with maximum throughput up to 2.35Gbps while quickly blocking the types of attacks that exploit protocol vulnerabilities. The stateful firewall integrates corporate security policies and real-time filtering of malicious internet traffic.

Uninterrupted Connection with WAN & Cellular Link

The dual 2.5 Gigabit WAN ports are capable of highly efficient load-balancing, increasing overall WAN bandwidth. The gateway also features redundant WAN link and cellular failover, automatically switching itself to a backup WAN or 3G/4G/5G network in the event of WAN uplink failure.

Secure Site-To-Site and Client VPN

The EnGenius security gateway features site-to-site and client VPN that can be activated in a few clicks without the hassle of configuring all VPN detail parameters, allowing businesses to create secure, private connections for communication and remote work.

Self-Healing Auto VPN

EnGenius Cloud continually monitors EnGenius gateway VPN connections and automatically updates VPN parameters to all peers while maintaining VPN connection even with WAN IP address reassignment or port forwarding changes.

Features & Benefits

- Simple, unified cloud management for enterprise business
- Intuitive and centralized device visibility from anywhere
- Quad core 2.2 GHz processor for greater speed and power
- Auto-VPN with healing and NAT traversal for multi-peer SD-WAN setup
- Dual 2.5GbE WAN and Dual 2.5GbE LAN for maximum performance
- 2.5 GbE PoE+ to power up a Wi-Fi 6E AP, IP camera or IP phone
- Multi-Gig and cellular WAN optimization with built-in load balancing and failover
- Enhance security with a high throughput firewall
- Quick VPN and VLAN setup for easy configurations
- WAN monitoring, VPN status and topology view for real-time visibility
- Passthrough mode for easy integration into existing networks
- TPM chipset to enhance the security level of the gateway
- Touchless system maintenance and automatic updates
- No licensing or subscription fees needed

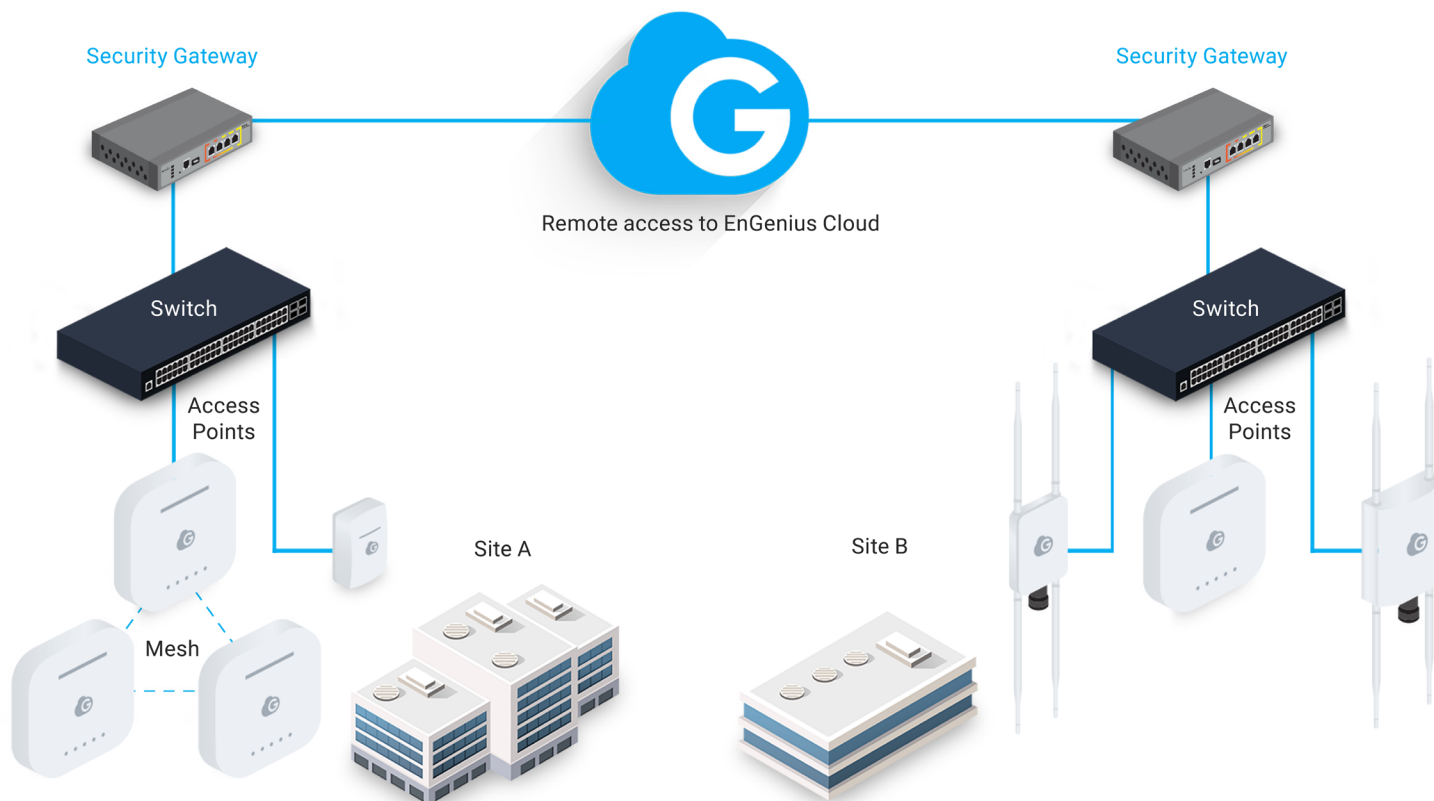
ESG610



Benefits for Your Business

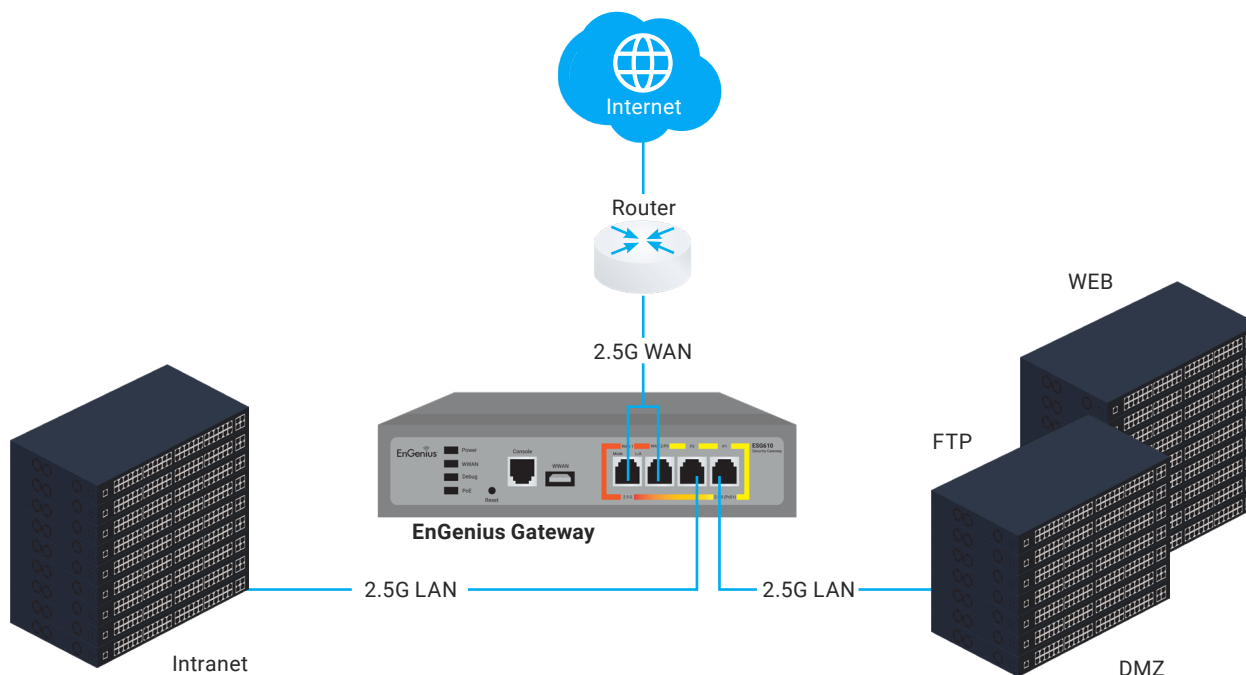
End to End Unified Cloud Management Solution

Provide businesses with a next-generation cloud solution that simplifies the management of networks with enterprise security gateways, reliable gigabit switching, and future-proof wireless access points through a single pane of glass or intuitive mobile app.



High-Speed Ports for Optimal Performance

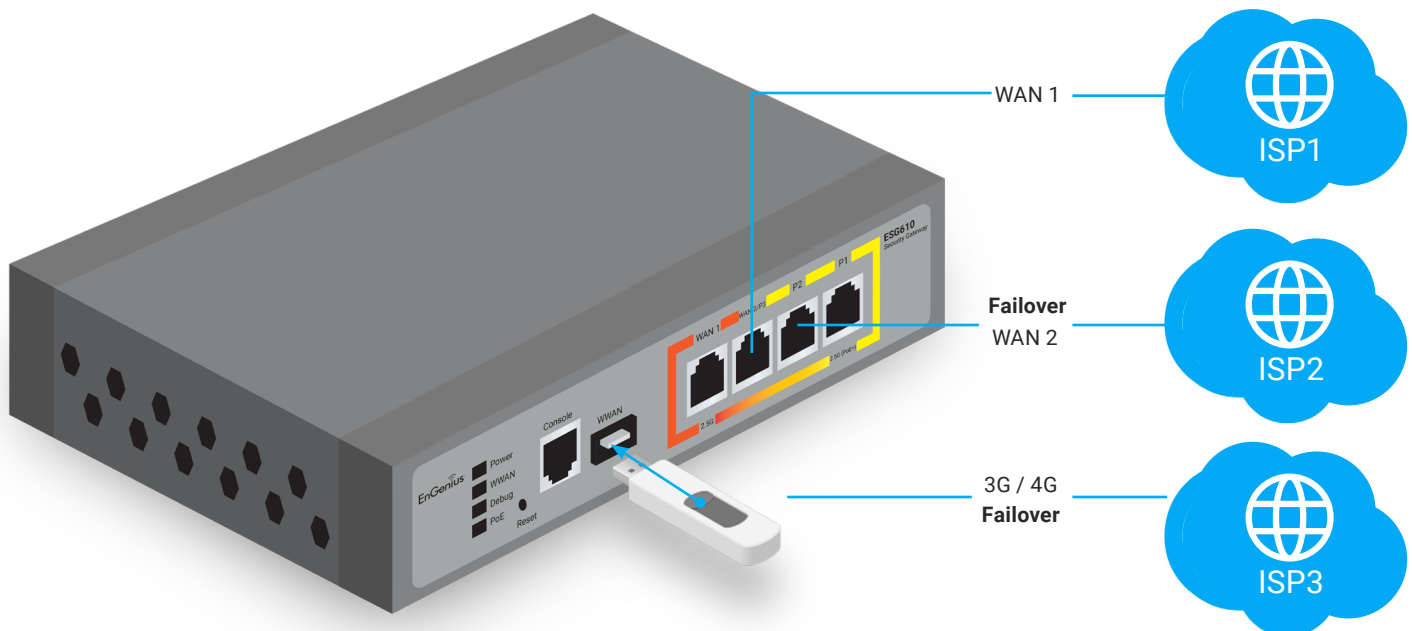
Businesses can meet higher network speed demands through the dual 2.5 gigabit WAN and LAN ports to ensure a reliable, smooth connection for external and in-line networking without any bottlenecks.



EnGenius Security Gateways protect business networks from threats and attacks without sacrificing performance. The stateful firewall of the gateway integrates corporate security policies and real-time filtering of malicious internet traffic while delivering high throughput.

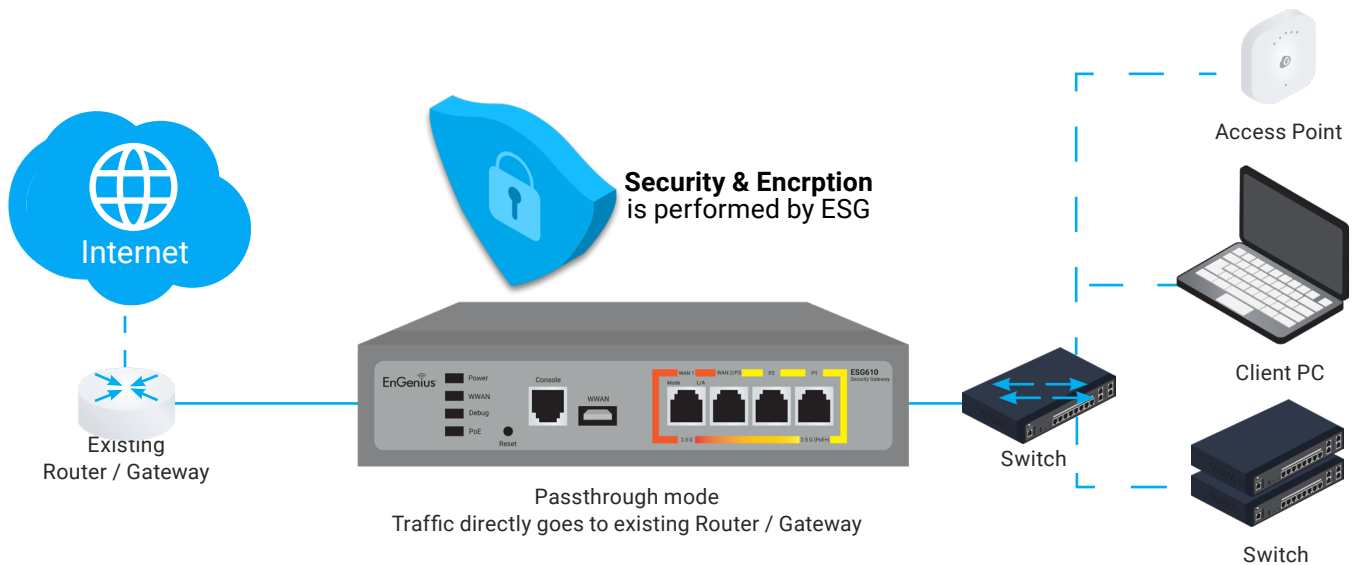


Businesses can stay connected through the security gateway's secondary 2.5 gigabit WAN port or a cellular dongle. The dual WAN ports are ready for load balancing to increase WAN bandwidth or redundancy links. The gateway's failover option can provide continuous connectivity through a 3G/4G/5G network or the secondary WAN to minimize disruption to business networks.



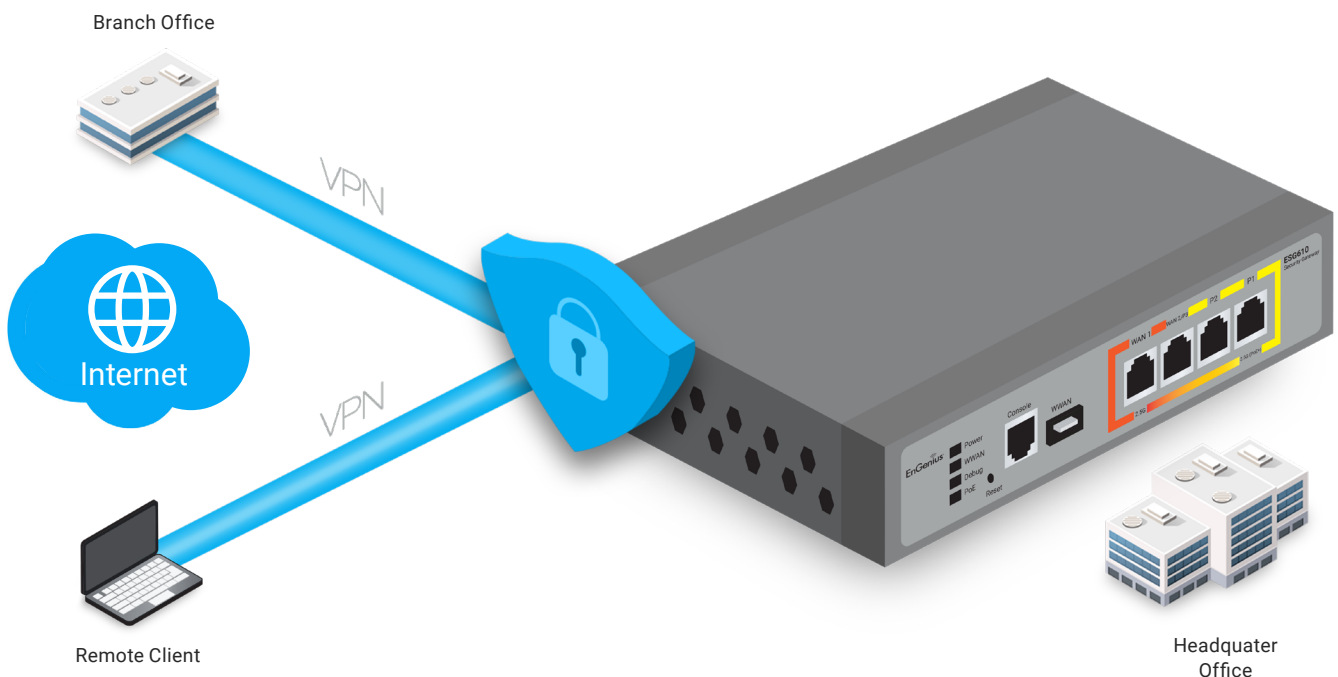
Secure Any Existing Network

The EnGenius Security Gateway can be placed on and secure any business network. The security gateway's "passthrough" mode will provide enterprise security protection and monitoring without affecting or disrupting existing gateway or router function in the network.



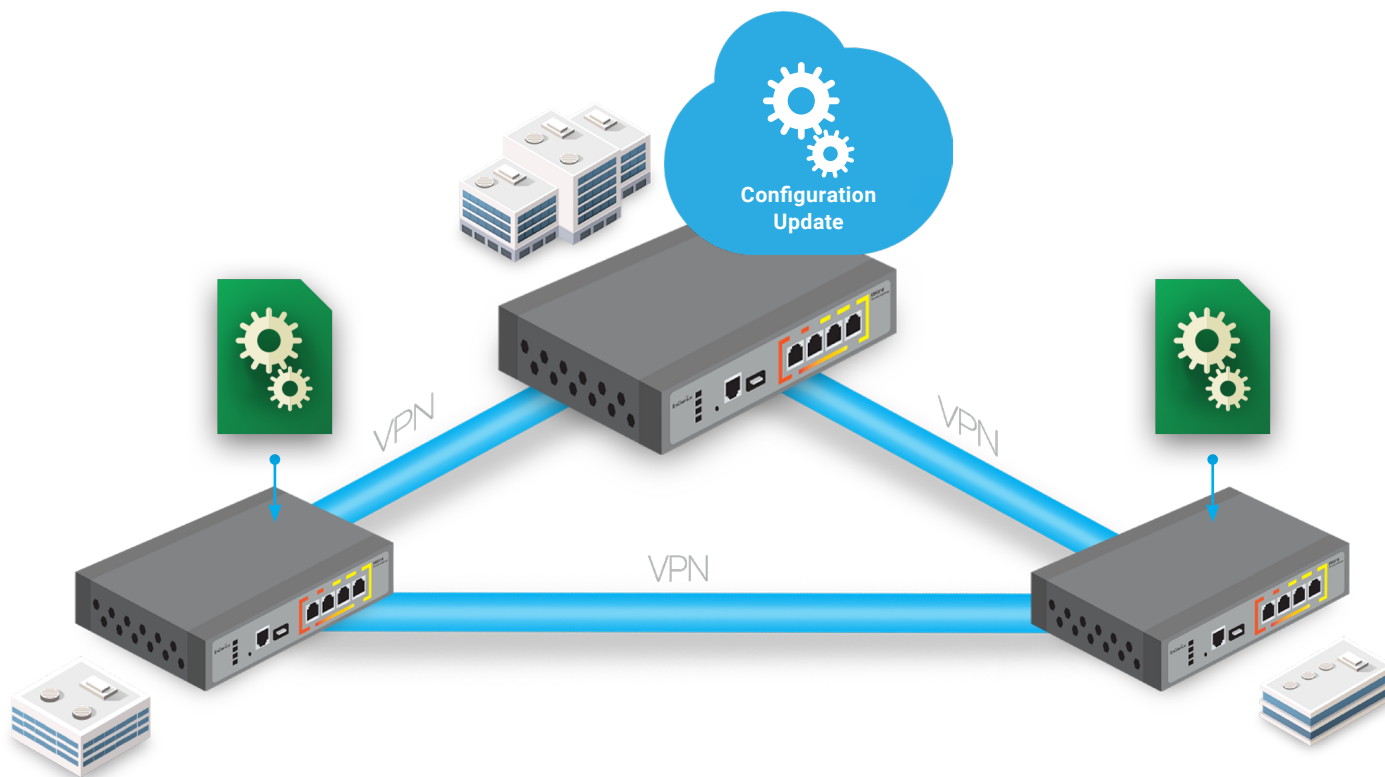
Secure Site-to-Site VPN and Client VPN

EnGenius Security Gateways enable businesses to create secure VPN connections for remote business sites and remote clients. Administrators can easily create fast site-to-site VPN tunnel connections maintaining corporate security policies for all remote business sites while keeping data and employees safe. Client VPN will secure private data communications between corporate headquarters and remote workers from anywhere.



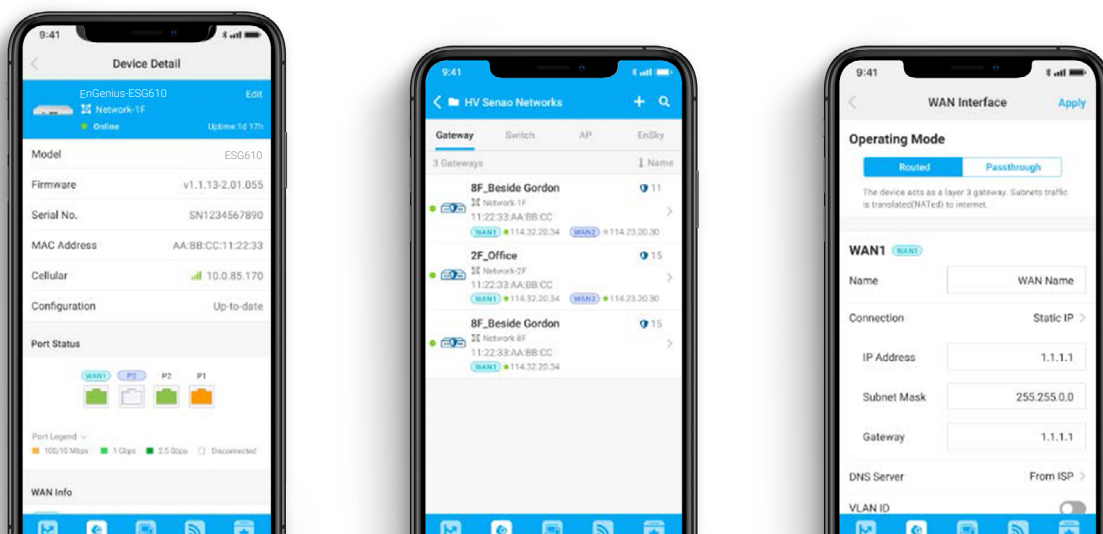
Easy Self-healing Auto VPN

EnGenius Security Gateways have the fastest VPN setup saving admins from time-consuming and complicated configurations. It takes just a few clicks to create a secure VPN connection without the hassle of configuring all the VPN detail parameters. EnGenius auto VPN will update WAN/IP parameters across sites to maintain connections in the event of WAN port configuration changes from the ISP.



Remote Management On-the-Go

Easy setup and central management of the entire network from absolutely anywhere with EnGenius Cloud interface and Cloud To-Go mobile app.



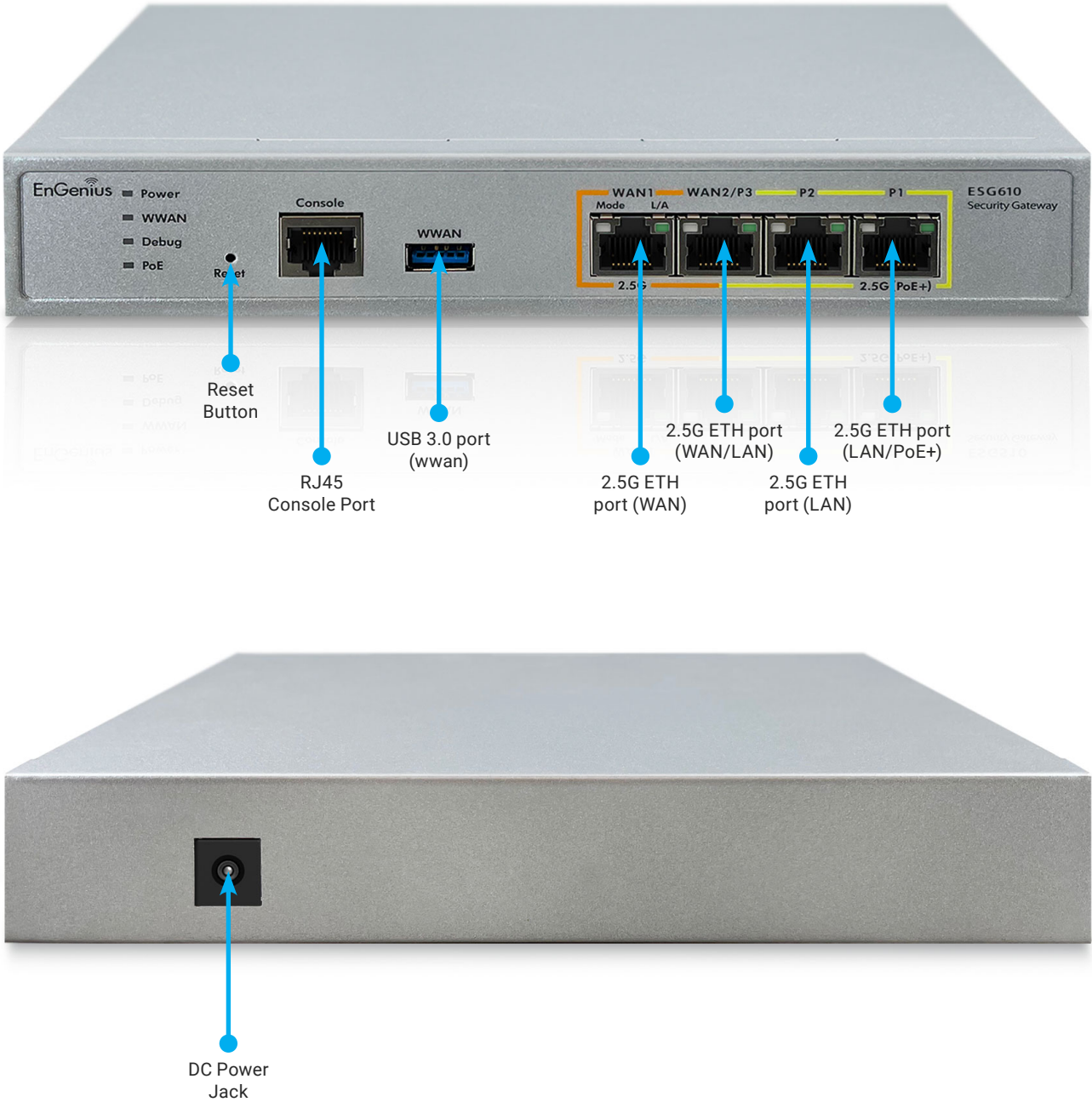
Technical Specifications

ESG610		
CPU Processor		
Quad-Core		
Operating Frequency		
2.2GHz		
Memory		
8GB		
Storage		
16GB		
Network Ports (Copper Ports)		
4 x 10/100/1000/2500 BASE-T, RJ-45 Ethernet ports		
Console Port		
1 x 10/100/1000, RJ-45 Ethernet port		
PoE+ Capable Port		
1 (802.3af/at) LAN (P1)		
Mounting Method		
Wall mount		
USB Interface		
1 x USB 3.0		
Security Chip		
TPM		
PERFORMANCE & CAPACITY		
Firewall (SPI Throughput)		
6.7 Gbps		
VPN Throughput		
1.7 Gbps		
Max. TCP Concurrent Sessions		
1,250,000		
Max. Concurrent VPN Tunnels		
300		
Max. VLAN		
256		
FIREWALL		
Firewall Features		
Stateful Packet Inspection		
Policy Rules		
Port Forwarding		
1:1 NAT		
Allow Inbound Services		
VPN		
Site-to-Site VPN		
Mesh VPN/Hub-and-Spoke		
Encryption		
DES, 3DES, AES (256-bit)		

Authentication		
MD5, SHA1, SHA2 (512-bit)		
Key Management		
IKEv1 (x-auth, mode-config)		
IKEv2 (EAP, configuration payload)		
VPN Features		
Site-to-Site VPN		
Client VPN		
Policy-based VPN		
IPsec NAT traversal (NAT-T)		
Dead Peer Detection (DPD)		
Auto-VPN Connection		
Auto NAT traversal		
NETWORKING		
Operation Mode		
Routed/Passthrough		
Multiple WANS		
Dual (WAN 1 & WAN/P3)		
Bandwidth Limit		
Per Interface/Per Client		
Traffic Load Balancing		
WAN load balancing with WRR		
Networking Features		
Static Route		
Multiple WANs		
USB Cellular		
User Authentication		
PPPoE		
VLAN Tagging		
Captive Portal		
Custom Splash Page		
Dynamic Routing		
Bandwidth Limit		
Traffic Load Balancing		
DHCP client/server/relay		
Dynamic DNS support		
ENVIRONMENTAL & PHYSICAL		
Power		
54V/1.2A		
Operating Temperature		
0°C to 40°C		
Humidity (non-condensing)		
5 to 95% non-condensing		

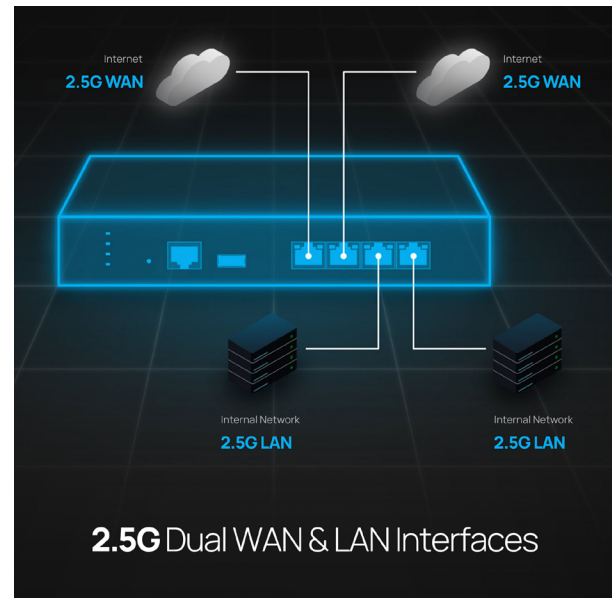
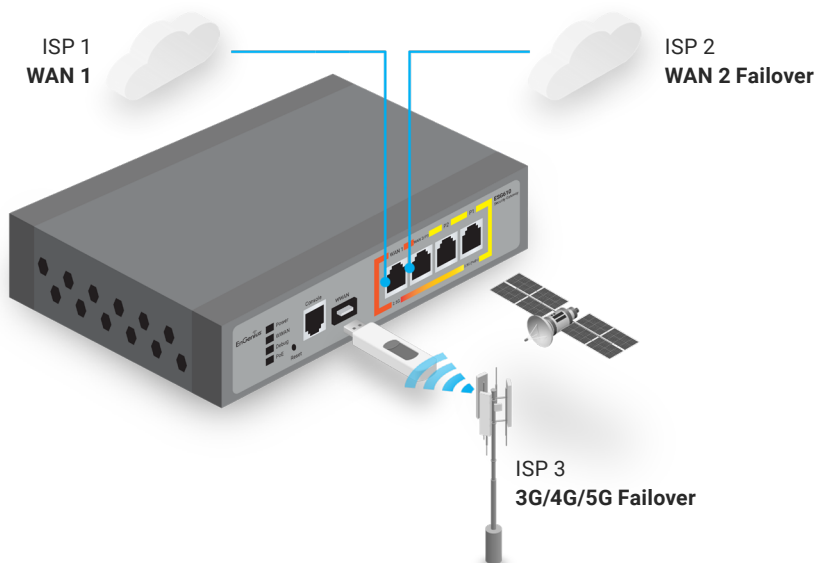
ENVIRONMENTAL & PHYSICAL		
Package Contents		
Power adapter		
Power cord		
RJ-45 Console Cable		
Wall Mount Kit		
Quick Installation Guide		
Dimensions & Weights Device		
Weight: 2.31 lbs. (1.05 kg)		
Width: 8.27” (210 mm)		
Length: 7.07” (179.5 mm)		
Height: 1.38” (35 mm)		
Packaging		
Weight: 3.75 lbs. (1.7 kg)		
Width: 3.93” (100 mm)		
Length: 10.81” (275 mm)		
Height: 11.59” (295 mm)		
Master Carton Dimensions & Weights		
Weight: 17.19 lbs. (7.8kg)		
Width: 11.4” (290 mm)		
Length: 16.9” (430 mm)		
Height: 12.38” (315 mm)		
Number of product boxes per master carton		
4 units		
COMPLIANCE & WARRANTY		
Regulatory Compliance		
FCC Part 15 (Class B)		
IC		
CE EMC (Class B)		
RCM		
BSMI		
Certifications		
CE, FCC, IC		
Warranty		
2 years		

ESG610 Gateway



Uninterrupted Connection

with WAN & Cellular Link



Plug & Play with Zero Configuration



EnGenius Cloud To-Go



EnGenius Technologies | 1580 Scenic Ave. Costa Mesa, CA 92626

Email: partners@engeniustech.com | Website: engeniustech.com

Local contact: (+1) 714 432 8668

EnGenius Technologies Canada | Ontario, Canada

Email: info@enginiuscanada.com | Website: engeniustech.com

Local contact: (+1) 905 940 8181

Maximum data rates are based on IEEE 802.11 standards. Actual throughput and range may vary depending on distance between devices or traffic and bandwidth load in the network.

Features and specifications subject to change without notice. Trademarks and registered trademarks are the property of their respective owners. For United States of America: Copyright ©2023 EnGenius Technologies, Inc. All rights reserved.

Version: 03/2023